

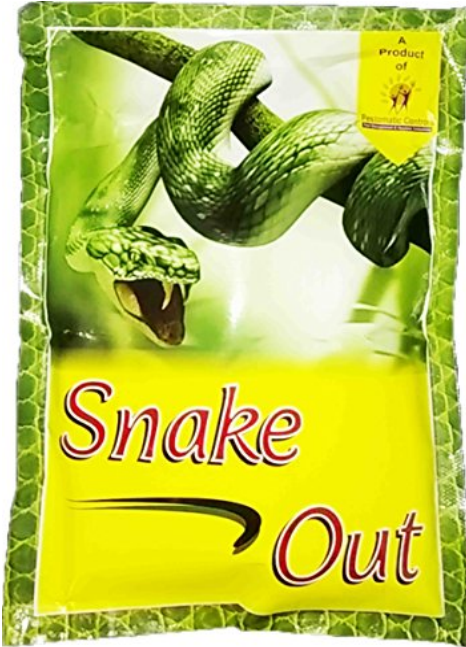


Pestomatic Controls®

Pest Management & Hygiene Consultant

Agriclinics & Agribusiness Centre

PESTOMATIC SNAKE OUT : SNAKE REPELLENT



[Check SOP of Snake Out](#)

[Check MSDS](#)

AVAILABLE ON FLIPKART



[BUY NOW](#)

[How to Use Snake Out](#)

Snake out is a solid material available in the form of a powder. The packet/pouch content is 1000 grams means 1 kg material. **The person applying the snake out powder shall wear protective.** The minimum requirement is Boiler suit or full cloths, Gum boot, rubber gloves, full goggle, Nose mask or full face mask with canister as per the need...

Re-apply snake out powder if heavy rainfall washed it away to be sure of the intact barrier. The product is designed for protection of Indian farmers and their livestock in villages.

Snake out can be mixed with equal volume of other filler to spread on longer and uniform areas. The material 1 kg is enough for 200 running ft.

As it contains Sulphur, Naphthalene, some herbs and Stabilizers it may be allergic to some person one should take care accordingly.

Make sure that the snake is not inside the premises before application.

For more help call on +91-94222-35816

Works :- A-2/6 MIDC Shirampur, Dist. Ahmednagar. PEST CONTROL TRAINING AVAILABLE

Office :- B-13, Sanskruti Appt., Opp. SBI Bank, Ward- 3, Shirampur, Dist- Ahmednagar. Pin 413709 **Ph-** 9422235816

Branch Office :- C-60, Ground Floor, Shoppers Orbit, In front of Big Bazaar, Alandi Road, Vishrantwadi, Pune - 411015

E-mail :- pestocontrols@gmail.com, pestocontrols@yahoo.com.

Website :- www.barefooterschool.com, www.pestomaticcontrols.co, www.pestomaticcontrols.com

Helpline :- 9881742427/9225549186/9225549187/ 02422-225596



Pestomatic Controls®

Pest Management & Hygiene Consultant

Agriclincs & Agribusiness Centre

General Application information of Snake Out :

1. Make survey & understand the problematic areas of snakes occurrence. We can stop snake entry in particular areas.
2. Decide the areas of snake occurrences to create an artificial barrier to protect ourselves or the areas of our habitat.
3. Break open pouch, Place the powder on the land areas to create barrier continuously by the pouch itself without leaving any gap.
4. This material is not soluble on water so place all possible areas where snake can hide. At trees, hedges, edges land marks put in such a way that it will remain there as a residual material.
5. Place the snake out powder at all the parking areas, windows and door sides to take care of either hiding or entering in home.
6. Apply in all the possible or hiding suspicious places while doing so you may find some insects, rats frogs rushing away from their places. Kindly note it repels insects, frogs also.
7. In open big jungle areas apply this only for artificial barrier for small areas to protect our life in tent or house.
8. Do not try to cover very big land jungle areas. Study the situation and apply at some places.

HOW TO USE :

1. The powder product is spread on the ground across an area where it is desired to prevent or discourage snakes from entering.
2. **Preferably, the powder should be spread in a strip 10-30 cm wide , although generally the wider the strip the better.**
3. In this manner, an odour barrier is provided that snakes are reluctant to cross.
4. Additionally a smaller amount of product may be scattered in diffuse or non-continuous manner just beyond the strip, on the side away from the area to be protected.
5. This added scattering of repellent serves to **lessen the probability** of occasional snakes wandering beyond the strip.

After use dispose the pouch by deep burial in jungle areas. First try to understand Biology habitat of Snake, later think of doing this as preventive measures for self-protection before application.

For demo of How to Use Snake Out click on link below:-

<https://youtu.be/58LE9iqMyoA>

[Check SOP of Snake Out](#)

Or Call on +91-94222-35816

Contact Specialist

Avinash Salunke

PESTOMATIC CONTROLS

Email- pestocontrols@gmail.com

Web- www.barefooterschool.com

PACKAGING

MINIMUM AVAILABLE PACKING – 1 KG

BOX PACK – 1x30 =

30 KG

[Check MSDS](#)

AVAILABLE ON FLIPKART



[BUY NOW](#)

Works :- A-2/6 MIDC Shirampur, Dist. Ahmednagar. PEST CONTROL TRAINING AVAILABLE

Office :- B-13, Sanskruti Appt., Opp. SBI Bank, Ward- 3, Shirampur, Dist- Ahmednagar. Pin 413709 **Ph-** 9422235816

Branch Office :- C-60, Ground Floor, Shoppers Orbit, In front of Big Bazaar, Alandi Road, Vishrantwadi, Pune - 411015

E-mail :- pestocontrols@gmail.com, pestocontrols@yahoo.com

Website :- www.barefooterschool.com , www.pestomaticcontrols.co , www.pestomaticcontrols.com

Helpline :- 9881742427/9225549186/9225549187/ 02422-225596



Pestomatic Controls[®]

Pest Management & Hygiene Consultant

Agriclinics & Agribusiness Centre

For Expert visit the Charges are

A. Training and demonstrations charges will be Rs. 10,000/-Plus Traveling

B. Time required for training, demonstration and all will be 3 hours.

C. Some photographs are permitted.

D. One kg. snake Out covers 200 rft (running feet) areal distance.

E. The Rate Of Snake Out (Material Cost) Is Rs 1250/- Per Kg

including GST Plus Transportation Cost Extra.

[Check MSDS of Snake out](#)

For More Products Visit Our Website

www.pestomatic.com

[BUY NOW](#)



Pestomatic Controls[®]

Pest Management & Hygiene Consultant

Agriclinics & AgribusinessCentre

Frequently Asked Questions

QUE: is this powder work out to get out snake?

ANS: Spread powder on the ground across area desired to prevent/discourage snakes from entering. Scattering repellent lessen probable entry. If barrier line is broken, or washed in monsoon re-apply it.

QUE: if once apply how long days it will be effective, how long days once have to change?

ANS: 180 days if undisturbed. It is reapplied anytime for repair if the barrier line is broken, it's not soluble in water so remains in same land, bushes still to ensure protection go for re-application.

QUE: How many days this powder will work on ground?

ANS: Once applied it works for min 90 to max 180 days if undisturbed, unbroken.

QUE: How to apply around my hut?

ANS: Use powder directly by spreading on ground for making barrier.

QUE: Hi I want to get rid of snake from my farmhouse. Is this medicine proper for that?

ANS: Yes Indeed it is useful.

QUE: Is this powder work in any season ?

ANS: Yes If barrier line is un-broken. In Summer, winter it remains naturally protected from but in monsoon @ every heavy rainfall eroding soils the re-application shall be done.

QUE: Frequency of spraying?

ANS: Spraying is not method of application. It shall be placed on ground by scattering to make an artificial barrier line.

QUE: Does this product affect pets or humans?

ANS: No. It doesn't harm Human and pet as well. It's safe once applied. Take precautions while applying.

QUE: Can I use this product when i have other pets on my farm land? I have hens, tukeys, bunnies and birds. Is it poisonous when other animals consume it?

ANS: Yes. Use it on grounds, open farm land, not in cages. It's not consumable, smells bad to animals.

QUE: Does it repels snakes?

ANS: Yes It does.

MATERIAL SAFETY DATA SHEET

1 PRODUCT AND COMPANY IDENTIFICATION

Product Name: Snake-Out
Synonyms: Not applicable
Molecular Formula: Not applicable
Molecular Weight: Not applicable
Product Number: 01 PC

Supplier:

Pestomatic Controls
A 2/6 MIDC Shrirampur
Dist Ahmednagar
413709 MS India

Intended Use: Snake repellent

2 COMPOSITION / INFORMATION ON INGREDIENTS

Hazardous component	CAS-No.	Weight %
Natural Sulfur (Neither wettable nor colloidal Sulphur)	7704-34-9	> 20
Naphthalene	91-20-3	< 10
Inert ingredients	not applicable	QS

QS. Quality Sufficient

3 HAZARDS IDENTIFICATION

Emergency Overview

Physical State: Solid
Color: Light Brown
Odor: Mothball

WARNING!

Flammable solid
Harmful if swallowed.
Causes skin and eye irritation.
May cause allergic skin reaction.
Dust or vapor causes irritation to eyes and respiratory tract.

Potential Health Effects

Inhalation: Causes irritation. Inhalation of dust or vapors can cause headache, nausea, vomiting, and disorientation.

Eye Contact: Causes irritation. Exposure may cause eye tearing, redness and discomfort

Skin Contact: Causes irritation. May cause sensitization by skin contact.
Exposure may cause redness, itching and inflammation.

Ingestion: Harmful if swallowed. May cause systemic effects. Extremely large oral dosages may produce gastrointestinal disturbances.

Chronic Health Effects: Possible cancer hazard – may cause cancer based on animal data. Repeated or prolonged exposure can cause target organ damage. Effects may be delayed. Chronic inhalation, skin absorption or ingestion of naphthalene has caused severe hemolytic anemia.

Target Organ(s): Eye, skin, lung, gastrointestinal tract, blood, CNS, kidney, liver

OSHA Regulatory Status: Hazardous

4 FIRST AID MEASURES

Inhalation: Move to fresh air. Get medical attention if symptoms occur.

Eye Contact: In case of contact, immediately flush eyes with plenty of water for at least 15 minutes. If easy to do, remove contact lenses, if worn. Get medical attention.

Skin Contact: In case of contact, immediately flush skin with plenty of water. Remove contaminated clothing and shoes. Get medical attention. Wash clothing before reuse.

Ingestion: If swallowed, induce vomiting as directed by medical personnel. Never give anything by mouth to an unconscious person. Get medical attention.

5 FIRE-FIGHTING MEASURES

Extinguishing Media: Water spray, dry chemical, carbon dioxide

Unsuitable Extinguishing Media: None known

Special Fire Fighting Procedures: Wear self-contained breathing apparatus and protective clothing.

Unusual Fire & Explosion Hazards: Fire may produce irritating and/or toxic gases. Yields flammable vapors on heating above melting point. Material in powder form, capable of creating a dust explosion.

Hazardous Combustion Products: Carbon oxides, sulfur oxides

6 ACCIDENTAL RELEASE MEASURES

Personal Precautions: Wear appropriate personal protective equipment. See Section 8.

Spill Cleanup Methods: Minimize dust generation and accumulation. Sweep up and place in a clearly labeled container for chemical waste. Do not allow material to enter drains or streams.

7. HANDLING AND STORAGE

Handling: Wear appropriate personal protective equipment. Avoid breathing dust or vapor. Avoid contact with eyes, skin and clothing. Do not taste or swallow. Use only with adequate ventilation. Wash thoroughly after handling.

Prevention of Fire and Explosion: Keep away from heat, sparks, and flame. Keep away from strong oxidizing agents. Minimize dust generation and accumulation. In the United States of America, refer to NFPA® Pamphlet No. 654, "Prevention of Fire and Dust Explosions in the Chemical, Dye, Pharmaceutical, and Plastics Industries."

Storage: Keep packets tightly closed until ready for use. Keep in a cool, well-ventilated place. Keep away from moisture.

8 EXPOSURE CONTROLS / PERSONAL PROTECTION

Exposure Limits:

Chemical Name	Source	Type	Exposure Limits	Notes
Naphthalene	ACGIH	TWA	10 ppm	Irritation; ocular; blood
Naphthalene	ACGIH	STEL	15 ppm	Irritation; ocular; blood
Naphthalene	OSHA Z-1	TWA	10 ppm	--
Naphthalene	NIOSH	IDLH	250 ppm	--

Engineering Controls: Use process enclosures, local exhaust ventilation, or other engineering controls to keep airborne contaminants below established exposure limits.

Respiratory Protection: If engineering controls do not keep airborne concentrations below established exposure limits, wear a NIOSH-approved respirator equipped with high-efficiency particulate filter(s). Contact health and safety professionals for specific information.

Eye Protection: Wear safety glasses with side shields (or goggles).

Hand Protection: Wear protective gloves and clothing. Contact health and safety professionals for additional information.

Skin Protection: Wear disposable coveralls, lab coat, or apron to prevent skin contact.

Hygiene Measures: Eye bath, washing facilities

9 PHYSICAL AND CHEMICAL PROPERTIES

Color: Light Brown

Odor: Mothball

Odor Threshold: No data available

Physical State: Solid

pH: No data available

Boiling Point: 444°C (831°F)

Melting Point: No data available
Flash Point: 94°C (201°F)
Evaporation Rate: No data available
Flammability Limit – Upper (%):No data available
Flammability Limit – Lower (%):No data available
Vapor Pressure: 0.04 mmHg @ 21°C
Vapor Density (Air=1): No data available
Specific Gravity: 0.432
Solubility in Water: Insoluble
Solubility (Other): No data available
Partition Coefficient (n-Octanol/water): No data available
Auto-ignition Temperature: No data available
Decomposition Temperature: No data available

10 STABILITY AND REACTIVITY

Stability: Stable

Conditions to Avoid: The reaction between water and molten naphthalene may be violent.

Incompatible Materials: Strong oxidizing agents

Hazardous Decomposition Products: Carbon oxides; sulfur oxides

Hazardous Polymerizations: Will not occur.

11 TOXICOLOGICAL INFORMATION

Specified Substances

Acute Toxicity

Chemical Name	Test Results
Naphthalene	Eye (Rabbit): Mild
Naphthalene	Skin (Rabbit): Mild
Naphthalene	Dermal LD ₅₀ (Rat): >2500 mg/kg
Naphthalene	Oral LD ₅₀ (Rat): 490 mg/kg
Naphthalene	Inhalation LC ₅₀ (Rat): >340 mg/m ³ /1H
Sulfur	Eye (Human): Irritant 8 ppm
Sulfur	Oral Lethal Dose (Rat): >8437 mg/kg

Listed Carcinogens:

Chemical Name	IARC	NTP	OSHA	ACGIH
Naphthalene	2B (Possible carcinogenic to humans)	Anticipated carcinogen		A4 (Not classifiable as a human carcinogen)

12 ECOLOGICAL INFORMATION

This material has not been tested for environmental effects.

13 DISPOSAL CONSIDERATIONS

General Information: Dispose in accordance with applicable federal, state, and local regulations.

Disposal Methods: No specific disposal method required.

Container: Since emptied containers retain product residue, follow label warnings even after container is emptied.

14 TRANSPORT INFORMATION

DOT:

Proper Shipping Name: Flammable solids, organic, n.o.s. (Naphthalene)

Class: 4.1

Packaging Group: III

Label: 4.1

Product Number FIN 362, 28 lb pail, as described in the DOT 49 CFR, 173.151 (b) (2), Consumer Commodity Provisions do not apply.

Product Number FIN 363, 1.75 lb container, meets the special provisions as described in the DOT 49 CFR, 173.151 (b) (2), and can be shipped as a Consumer Commodity.

Product Number FIN 364, 4 lb container, meets the special provisions as described in the DOT 49 CFR, 173.151 (b) (2), and can be shipped as a Consumer Commodity.

Product Number FIN 3644, 4 lb container, meets the special provisions as described in the DOT 49 CFR, 173.151 (b) (2), and can be shipped as a Consumer Commodity.

Product Number FIN 36448, 4 lb container, meets the special provisions as described in the DOT 49 CFR, 173.151 (b) (2), and can be shipped as a Consumer Commodity.

Product Number FIN 364PC, 4 lb container, meets the special provisions as described in the DOT 49 CFR, 173.151 (b) (2), and can be shipped as a Consumer Commodity.

Product Number FIN 366, 236 lb container, as described in the DOT 49 CFR, 173.151 (b) (2), Consumer Commodity Provisions do not apply.

Consumer Commodity Provisions: In containers of 5L (5.0 kg; 11 lbs) capacity or less, this product is classified as "Consumer Commodity."

TDG:

Proper Shipping Name: Flammable solids, organic, n.o.s. (Naphthalene)

Class: 4.1

Packaging Group: III

Label: 4.1

IATA:

Proper Shipping Name: Flammable solids, organic, n.o.s. (Naphthalene)

Class: 4.1

Packaging Group: III

Label: Flammable Solid

Special provisions: None

Passenger aircraft: 25 kg quantity limitation

Cargo aircraft: 100 kg quantity limitation

IMDG:

Proper Shipping Name: Flammable solids, organic, n.o.s. (Naphthalene)

Class: 4.1

Packaging Group: III

Label: 4.1

Product Number FIN 362, 28 lb pail, as described in the International Maritime Dangerous Goods IMDG Code, 2004 edition, Chapter 3.4 Limited Quantities, Limited Quantity Provisions do not apply.

Product Number FIN 363, 1.75 lb container, meets the special provisions as described in the International Maritime Dangerous Goods IMDG Code, 2004 edition, Chapter 3.4 Limited Quantities, and can be shipped as a Consumer Commodity.

Product Number FIN 364, 4 lb container, meets the special provisions as described in the International Maritime Dangerous Goods IMDG Code, 2004 edition, Chapter 3.4 Limited Quantities, and can be shipped as a Consumer Commodity.

Product Number FIN 3644, 4 lb container, meets the special provisions as described in the International Maritime Dangerous Goods IMDG Code, 2004 edition, Chapter 3.4 Limited Quantities, and can be shipped as a Consumer Commodity.

Product Number FIN 36448, 4 lb container, meets the special provisions as described in the International Maritime Dangerous Goods IMDG Code, 2004 edition, Chapter 3.4 Limited Quantities, and can be shipped as a Consumer Commodity.

Product Number FIN 364PC, 4 lb container, meets the special provisions as described in the International Maritime Dangerous Goods IMDG Code, 2004 edition, Chapter 3.4 Limited Quantities, and can be shipped as a Consumer Commodity.

Product Number FIN 366, 236 lb container, as described in the International Maritime Dangerous Goods IMDG Code, 2004 edition, Chapter 3.4 Limited Quantities, Limited Quantity Provisions do not apply.

Limited Quantity Provision/Exemption: In containers of 5L (5.0 kg; 11 lbs) capacity or less, this product is classified as a "Consumer Commodity" under IMDG regulations. Limited quantities of dangerous goods for personal or household use that are packaged and distributed in a form intended or suitable for sale through retail agencies are in addition exempt from marking of the Proper Shipping Name and UN Number on the packaging.

15 REGULATORY INFORMATION

Products Regulations: This product has been classified according to the hazard criteria of the Canadian Controlled Products Regulations, Section 33, and the MSDS contains all required information.

WHMIS Classification: B4, D1B, D2A, D2B

Inventory Status

This product or all components are listed on the following inventory: TSCA, DSL

Component	Reportable Quantity
Naphthalene	100 lbs

SARA Title III**Section 302 Extremely Hazardous Substance (40 CFR 355, Appendix A):** None**Section 311/312 (40 CFR 370):**

Acute (Immediate)
 Chronic (Delayed)
 Fire
 Reactive
 Pressure Generating

Section 313 Toxic Release Inventory (40 CFR 372):

Component	CAS No.	Concentration
Naphthalene	91-20-3	99.95%

Clean Air Act (CCA) Section 112, 1990 Amendments, Statutory Hazardous Air Pollutants:
Naphthalene

Clean Air Act (CAA) Section 112(i) High-Risk Hazardous Air Pollutants (40CFR 63.74): None**Clean Air Act (CAA) Section 112(r) Accidental Release Prevention (40CFR 68.130):** None**Clean Water Act Section 307 Toxic Pollutants (40 CFR 401.15):** Naphthalene**Clean Water Act Section 311 Hazardous Chemical (40 CFR 116.4):** Naphthalene**Clean Water Act Section 311 Hazardous Substances (40 CFR 117.3):** Naphthalene**Drug Enforcement Act:****Drug Enforcement Administration (21 CFR 1310.02(b) and 1310.04 (f)(2)):** None**Drug Enforcement Administration (21 CFR 1310.12(c)):** None**TSCA:****TSCA Section 4(a) Final Test Rules & Testing Consent Orders:** Naphthalene**TSCA Section 12(B) Export Notification (40 CF\$ 707, Subpt D):** Naphthalene**State Regulations****Safe Drinking Water and Toxic Enforcement Act of 1986 (Proposition 65):**

WARNING: This product contains a chemical known to the State of California to cause cancer or reproductive toxicity:

California Prop 65 chemical: Naphthalene

16	OTHER INFORMATION
-----------	--------------------------

Hazard Ratings

	Health Hazard	Fire Hazard	Reactivity Hazard	Special Hazard
NFPA	2	2	0	--

	Health Hazard	Fire Hazard	Reactivity Hazard
HMIS	2*	2	0

0 – Minimal; 1 – Slight; 2 – Moderate; 3 – Serious; 4 – Severe; *- Chronic health effect

Revision Information: Update composition, add toxicological data, add regulatory information

Issue Date: 05/09/2019

Disclaimer: The information in this MSDS was obtained from current and reliable sources. However, the data is provided without any warranty, expressed or implied, regarding its correctness or accuracy. Since the conditions of handling, storage and disposal of this product are beyond our control, it is the responsibility of the user both to determine safe conditions for use of this product and to assume full responsibility for loss, injury, and expense arising out of products improper use. No warranty expressed or inferred, regarding the product described in this MSDS shall be created or inferred by any statement in this MSDS. Various government agencies may have specific regulations regarding the transportation, handling, storage, use or disposal of this product which may not be covered in this MSDS. The user is responsible for full compliance.

[Back to Main Page](#)



Pestomatic Controls®

Pest Management & Hygiene Consultant

Agriclincs & Agribusiness Centre

Snake-Out: How to Use! SOP (Standard Operating Procedures)

05.09.19

Back ground Before Application of Snake-Out try to know biology & habitat of Snake, then use Snake-Out as preventive measures of snakes. The product is designed for protection of Human life, pet in Indian lands, gardens, factories, farmers and their livestock from snake bite. Snake shows itself as much as a normal and quiet organism. Behavior of snakes is to move slowly in a deliberate and investigatory manner.

In our experiments we have seen snake's responses to the repellent in as near to natural-normal conditions as possible, so we recommend to apply Snake-Out Powder by spread on the ground across an area where it is desired to prevent or discourage snakes from entering. Preferably, the Powder should be spread in a strip 10-30 centimeters wide, although generally the wider the strip the better. In this manner, an odour & contact barrier of Snake-Out is provided to which snakes are reluctant to cross. Additionally, a smaller amount of the product may be scattered in diffuse or non-continuous manner just beyond the strip, on the side away from the area to be protected. This added scattering of the repellent serves to lessen the probability of occasional snakes wandering beyond the strip. If barrier line is broken, Snake-Out shall be re-applied on to repair the barrier, but protected from heavy rainfall. After heavy rainfall eroding soils the re-application shall be done. Though Snake-Out not soluble in water though remains there in the same land, bushes, and shrubs still to ensure protection re-application is recommended. In experiment snakes exhibited even overt avoidance of the repellent, and if sometimes some snakes try to cross the repellent. These snakes exhibited avoidance behavior first, eventually moving across the repellent strip while rubbing the head against the ground, seemingly attempting to escape from the repellent strip. Repelled snakes show no hesitation to leave the place. Every time start treatment at interior sections working outward. Leave snake evacuation route open (1 side) to flush out resident snakes that may be present, close open area off this untreated area within 7-10 days. Create complete perimeter around areas to be protected after 7-10 days (Not to be used by persons with perfume allergies). Keep away from children.

DIRECTIONS: Snake out is a solid material available is in the form of a powder. The pouch content is 1000 Grams. The person applying the snake out powder shall wear protective before placement of the powder. The minimum requirement is Boiler suit, Gum boot, rubber gloves, full goggle, nose mask or full face mask with canister and or helmet as per the need of the situations.

INGREDIENTS:

Proprietary Blend of natural Sulphur and other ingredients, including natural herbs, Naphthalene. (See MSDS for all ingredient details.)

1. Break open pouch at one corner once the area to be protected is decided. Start scattering as bar-line marking at areas of snake occurrence to create an artificial barrier.
2. Place the powder on the ground, land areas from the opened small mouth of the pouch continuously without leaving any gap in strip of 10-30 cm.
3. At trees, hedges, edges land marks put in such a way that it will remain there for longer time as a residual material.
4. Place the snake out powder at all the parking areas, windows and door sides to take care of either Snake-hiding or entering places in home and premises. Mark the area if possible.

Works : - A-2/6 MIDC Shirampur, Dist. Ahmednagar. PEST CONTROL TRAINING AVAILABLE www.barefooterschool.com

Office :- B-13, Sanskruti Appt., Opp. SBI Bank, Ward- 3, Shirampur, Dist- Ahmednagar. Pin 413709 **Ph-** 9422235816

Training Office :- C-60, Barefooter School, Ground Floor, Shoppers Orbit, Alandi Road, Vishrantwadi,Pune - 411015

E-mail :- avinash@pestomatic.com , info@barefooterschool.com

Website :- www.barefooterschool.com , www.pestomatic.com , www.pestomaticcontrols.co

Helpline : - 9881742427/9225549186/9225549187/ 02422-225596



Pestomatic Controls®

Pest Management & Hygiene Consultant

Agriclinics & Agribusiness Centre

5. Apply at all the possible or hiding suspicious places while doing so you may find some insects, frogs rushing away getting repelled. Please, note Snake-Out repels but does not harm to Human, animals, insects, frogs, pet & even birds.

Note: Do not disturb Natural food chain, natural habitat, Snakes are friends. They are most important part of food chain. The natural predator-parasite food cycle shall be kept normal at maximum possible ways. In exceptional case apply this in only for artificial barrier if very necessary in human areas, later it shall be broken if not required. Do not try to cover very big land, entire jungle, forest areas.

Disposal: The empty pouch after use shall be disposed by deep burial in barren land safely.

Storage: Store below 30°C Temperature in cool dry place away from children. Made in the India.

For Questions or Comments:

91-9422235816 avinash@pestomatic.com

Avinash Salunke, Content Specialist,

Pestomatic Controls Agri-Clinics Agri Business Centre

Shrirampur.

Dist. Ahmednagar.

Pin 413709 MS India

www.pestomatic.com

pestocontrols@gmail.com

Date 05/09/2019

[Back to Main Page](#)

Works : - A-2/6 MIDC Shirampur, Dist. Ahmednagar. PEST CONTROL TRAINING AVAILABLE www.barefooterschool.com
Office :- B-13, Sanskruti Appt., Opp. SBI Bank, Ward- 3, Shirampur, Dist- Ahmednagar. Pin 413709 **Ph-** 9422235816
Training Office :- C-60, Barefooter School, Ground Floor, Shoppers Orbit, Alandi Road, Vishrantwadi, Pune - 411015
E-mail :- avinash@pestomatic.com, info@barefooterschool.com
Website :- www.barefooterschool.com, www.pestomatic.com, www.pestomaticcontrols.co
Helpline :- 9881742427/9225549186/9225549187/ 02422-225596